



# UWI

CAVE HILL CAMPUS  
BARBADOS, WEST INDIES



# FACULTY OF SOCIAL SCIENCES

UNDERGRADUATE | CAVE HILL CAMPUS

# FACULTY OF SOCIAL SCIENCES

## QUALIFICATIONS FOR ADMISSION

### ENTRY REQUIREMENTS

#### Full Matriculation

##### Three-Year Programme

- Minimum of five (5) CXC / CSEC General Proficiency (Grades 1-3) or GCE O-level subjects (Grades A-C) which must include English Language and either one of the following: a Foreign Language, Mathematics, Geography or an approved Science subject. (Mathematics is required for any Majors offered in the Department of Management or Economics) **and**
- Passes in at least two (2), two-unit CAPE subjects or two GCE A-level subjects or the equivalent, **OR**
- An Associate Degree from an approved tertiary level institution, with a minimum Grade Point Average of 2.5 or above.

For Accounts and Management concentrations, students must be fully qualified.

#### Lower level Matriculation

##### Four-Year Programme

- Minimum of five (5) CXC / CSEC General Proficiency (Grades 1-3) or GCE O-level subjects (Grades A-C) which must include English Language and either one of the following: a Foreign Language, Mathematics, Geography or an approved Science subject. (Mathematics is required for any Majors offered in the Department of Management or Economics).



## INTERNATIONAL ENTRANCE QUALIFICATIONS

**We consider a wide range of qualifications for entry.** Here is a list of the overseas qualifications which are eligible for normal matriculation for admission to our degree programmes.

- Holders of the Ontario Secondary School Diploma (OSSD) Grade 12, with an overall Grade of at least 60% or holders of equivalent Canadian qualifications
- Holders of the International Baccalaureate
- Holders of the Dutch qualifications VWO/Associate Degree and HAVO/MBO4
- **SAT:** Lower Matriculation - Students should present an acceptable high school grade transcript with a minimum GPA of 2.5 and a minimum score of 1050 for SAT 1, for entry to **four-year** programmes
- **SAT:** Normal Matriculation - Students should present an acceptable Grade 12 high school transcript with a minimum GPA of 3.0 and a minimum score of 1200 for SAT 1, for entry to **three-year** programmes.

**You are required to request that your school/college transcripts** be sent directly to the Student Affairs (Admissions) section. You should also note that **complete academic records are necessary**, showing actual grades in courses/subjects, and an overall GPA. If transcripts and relevant documents are in a language other than English, notarised translations are required. **Course descriptions are essential**, particularly if you are applying for exemptions.

**If you hold other foreign qualifications** they must be assessed through the Barbados Accreditation Council or World Education Services (WES), after which the results should be forwarded to the Admissions Office. If your qualifications are accepted, the originals or certified copies of your certificates must accompany your application forms. If certified copies are submitted, you must show the original certificates at the time of registration.



## PROFICIENCY TEST FOR ALL UWI APPLICANTS

**All applicants** to The UWI, unless exempted, are required to take an English Language Proficiency Test (ELPT). **Applicants** must register and pay the exam fee before the day of the ELPT. You can pay at the Cashier, 1st Floor of the Hilary McDonald Beckles Administration Complex. *Note:* Payments are NOT accepted on the day of the Test.

Further information regarding the ELPT can be found at <https://www.cavehill.uwi.edu/admissions/elpt.aspx>.

### ENGLISH LANGUAGE PROFICIENCY TEST (ELPT)

You must present valid picture identification, e.g. a national identification card, passport or driver's license, along with receipt of payment to gain entry to the Test. The Test is normally scheduled in April and again in August for late applications.

**Applicants who possess ONE of the following are exempted from taking the Test:**

- Grade 1 in CXC / CSEC General Proficiency in English 'A'
- Grade 1 or 2 in the CAPE Communication Studies
- Grade A in the Cambridge GCE 'O' Level English Language
- Grade A or B in the Alternative Ordinary (AO) General Paper
- Applicants to the Faculty of Law or the Faculty of Medical Sciences, who already hold a degree or a pass in English Literature at Advanced Level
- Applicants who are graduates of the Barbados Community College with Grade B or higher in CORE 100 English and Communication
- Applicants with Grade B or above in a College English Course from an approved University.



**Social Sciences students who pass or are exempted from the Test must complete ONE of the following Level 1 English Language Foundation courses:**

- FOUN 1006 - Exposition for Academic Purposes **OR**
- FOUN 1008 - An Introduction to Professional Writing

**Failure in the Test:** Those who fail or who did not take the Test (and do not possess one of the exemptions listed above), are required to register and pass the course **FOUN 0100 – Fundamentals of Written English** *BEFORE* attempting one of the Level 1 English Language Foundation courses. FOUN 0100 is coordinated within the Academic Literacies Programme of the Faculty of Humanities and Education and is presently offered in both semesters and Summer for a fee.

## MATHEMATICS PROFICIENCY TEST (MPT)

For specified programmes within the Faculty of Social Sciences, some applicants are required to do a Mathematics Proficiency Test (MPT). There are alternative dates in the months of January, April and August for sitting the Mathematics Proficiency Test (MPT). All candidates must register for the MPT by sending an email to *economics@cavehill.uwi.edu* with "MPT Test" in the subject line and the preferred time for taking the Test, from the options provided on the website.

The fee for the Test is payable at the Cashier section of the Bursary. Information regarding the guidelines and fees for the MPT can be found at <https://www.cavehill.uwi.edu/admissions/mpt.aspx>. *Note:* Payments are NOT accepted on the day of the Test.

In order to gain entry to the Test all candidates must present a valid picture identification, e.g. a national identification card, passport or driver's license, along with the receipt of payment for the Test.

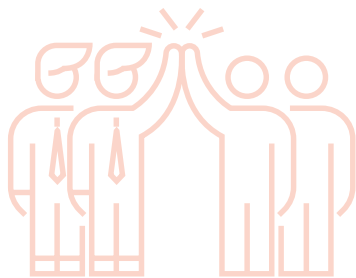
There are certain exemptions that exclude students from taking the test. The full list of exemptions can be accessed at <https://www.cavehill.uwi.edu/admissions/mpt.aspx>. Students who possess one of the exemptions listed are exempt from taking the test.

**Social Sciences students who pass or are exempted from the Test must complete the following Level 1 Economics courses:**

- (1) ECON 1003 - Mathematics for Social Sciences 1 **OR**  
ECON 1005 - Introduction to Statistics.

**Failure in the Test:** Those who fail or who did not take the Test (and do not possess one of the exemptions), are required to register and pass the course **ECON 0101 – Preliminary Mathematics for Social Sciences\*** **BEFORE** attempting one of the Level 1 courses mentioned above.

\* ECON 0101 is coordinated by the Department of Economics.



## SPECIAL DEPARTMENTAL REQUIREMENTS

### B.Sc. Hospitality and Tourism Management

This is a four-year programme offered jointly with the Barbados Community College (BCC), Antigua and Barbuda Hospitality Training Institute (Antigua), T.A. Marryshow Community College (Grenada), Sir Arthur Lewis Community College (St. Lucia) and Clarence Fitzroy Bryant College (St. Kitts). Applicants must first complete the two-year Associate Degree in Applied Arts – Tourism and Travel option **OR** the Associate Degree in Applied Arts – Hospitality Studies option (or equivalent) with a minimum of 2.75 Grade Point Average, in order to gain admission to Years 3 and 4 in the Faculty.

### B.Sc. Social Work

Each applicant, irrespective of academic qualifications, must satisfy the following departmental requirements:

- **Applicants are asked to request that two referees** submit CONFIDENTIAL references attesting to the applicant's suitability for the profession of Social Work to the Assistant Registrar, Student Affairs
- **Applicants must submit a personal statement** of between 250-300 words giving his/her reasons for wanting to study for the degree in Social Work
- **Applicants must attend an interview** with the Faculty of Social Sciences personnel. Applicants from the non-campus countries will be interviewed by persons nominated by the Faculty.



## CO-CURRICULAR CREDITS



- (A) Students will be eligible for no more than (3) credits (one course) for involvement in co-curricular activities. The activities may be campus specific
- (B) Co-curricular credits will be awarded on the following basis:
- Students should be registered for the co-curricular course for one semester
  - Explicit learning outcomes are identified for each course AND
  - Students must successfully complete the defined mode(s) of assessment
- (C) The Office of Student Services and the School of Education on each campus will administer the award of credits
- (D) The grading of co-curricular credits will be pass/fail
- (E) All co-curricular activities/programmes must be approved in advance by the Faculty and Academic Board
- (F) Subject to Faculty Regulations, co-curricular credits will form part of the ninety (90) credits for a degree. However, in special circumstances, if credits are earned in excess of those required for the degree, these and the associated activities will be included on the student's transcript.





## DEGREES OFFERED

Degrees are offered in the following categories:

- SPECIAL
- MAJOR
- DOUBLE MAJOR
- MAJOR/ MINOR
- THREE MINORS (restricted to B.Sc. Social Sciences).

A student must be formally registered in one of these programme options:

- A **Special** comprises a minimum of forty-five (45) credits in the subject area, over Levels 2 and 3.
- A **Major** comprises a minimum of thirty (30) credits in the subject area, over Levels 2 and 3.
- A **Double Major** comprises a minimum of thirty (30) credits each in two (2) subject areas, over Levels 2 and 3.
- A **Major/Minor** comprises a minimum of thirty (30) Levels 2 and 3 credits in the subject area of the major, and fifteen (15) Levels 2 and 3 credits in the subject area of the minor.





# PROGRAMMES OF STUDY OFFERED IN THE FACULTY

## B.SC. SOCIAL SCIENCES

The B.Sc. Social Sciences degree is designed to meet the needs of those students who wish to pursue a broad exposure to the Social Sciences.

**Students must choose three (3) minors from the following subject areas:**

- (A) Accounting
- (B) Economics
- (C) Management OR  
Public Sector Management
- (D) Gender and Development Studies
- (E) Political Science
- (F) Sociology
- (G) Psychology
- (H) International Relations
- (I) Criminology

---

## DEPARTMENT OF ECONOMICS

### Specials

- B.Sc. Banking and Finance
- B.Sc. Economics (Special)
- B.Sc. Economics (Specialisation in Development Economics)
- B.Sc. Economics (Specialisation in International Economics)
- B.Sc. Economics (Specialisation in Planning and Policy)
- B.Sc. Economics (Specialisation in Quantitative Economics)

### Major

- B.Sc. Economics (Major)

### Joint Majors

- B.Sc. Economics and Accounting
- B.Sc. Economics and Finance
- B.Sc. Economics and History
- B.Sc. Economics and Law
- B.Sc. Economics and  
Management
- B.Sc. Economics and Mathematics
- B.Sc. Economics and  
Management (Marketing)
- B.Sc. Economics and  
Political Science

### Major/Minor Options

- B.Sc. Economics with Accounting
- B.Sc. Economics with History
- B.Sc. Economics with Law
- B.Sc. Economics with  
Management
- B.Sc. Economics with  
Mathematics
- B.Sc. Economics with  
Political Science
- B.Sc. Economics with Public  
Sector Management

## **DEPARTMENT OF GOVERNMENT, SOCIOLOGY, SOCIAL WORK AND PSYCHOLOGY**

### **Specials**

- B.Sc. International Relations
- B.Sc. Labour & Employment Relations
- B.Sc. Political Science
- B.Sc. Psychology
- B.Sc. Public Sector Management
- B.Sc. Social Work
- B.Sc. Sociology

### **Joint Majors**

- B.Sc. Political Science and Economics
- B.Sc. Political Science and French
- B.Sc. Political Science and History
- B.Sc. Political Science and Law
- B.Sc. Political Science and Management
- B.Sc. Political Science and Philosophy
- B.Sc. Political Science and Psychology
- B.Sc. Political Science and Spanish
- B.Sc. Sociology and Law
- B.Sc. Sociology and Political Science
- B.Sc. Sociology and Psychology

### **Major/Minor Options**

- B.Sc. International Relations with a Minor
- B.Sc. International Relations with two Minors
- B.Sc. Political Science with Economics
- B.Sc. Political Science with French
- B.Sc. Political Science with Gender & Development Studies
- B.Sc. Political Science with History
- B.Sc. Political Science with Law
- B.Sc. Political Science with Management
- B.Sc. Political Science with Philosophy
- B.Sc. Political Science with Public Sector Management
- B.Sc. Political Science with Psychology
- B.Sc. Political Science with Sociology
- B.Sc. Political Science with Spanish
- B.Sc. Political Science with Two Minors
- B.Sc. Psychology with Management
- B.Sc. Psychology with Political Science
- B.Sc. Psychology with Sociology
- B.Sc. Sociology with Criminology
- B.Sc. Sociology with Cultural Studies
- B.Sc. Sociology with Gender & Development Studies

- B.Sc. Sociology with History
- B.Sc. Sociology with Law
- B.Sc. Sociology with Political Science
- B.Sc. Sociology with Psychology

## DEPARTMENT OF MANAGEMENT STUDIES

### Specials

- B.Sc. Accounting
- B.Sc. Management
- B.Sc. Management (Entrepreneurship)
- B.Sc. Management (Finance)
- B.Sc. Management (Human Resource Management)
- B.Sc. Management (International Business)
- B.Sc. Management (Marketing)
- B.Sc. Management (Tourism & Hospitality Management)

### Joint Majors

- B.Sc. Accounting and Finance
- B.Sc. Hospitality and Tourism Management – Offered jointly with the Barbados Community College (BCC). For Students who have completed the BCC Associate Degree in Applied Arts – Tourism and Travel, or the Associate Degree in Applied Arts – Hotel Catering and Institutional Operations.

- B.Sc. Tourism Management \*
- B.Sc. Hotel Management degree \*
- \* Offered jointly with the Centre for Hotel and Tourism Management only. Level 1 is completed at Cave Hill Campus with The Department of Management Studies. Levels 2 and 3 are completed at the Centre.

### Major/Minor Options

- B.Sc. Management with French
- B.Sc. Management with Psychology
- B.Sc. Management with Spanish.



**YOU  
BELONG  
AT THE  
UWI**



## Faculty of Social Sciences

Tel: (246) 417-4265 / 4266 / 4268 / 4269

Email: [socsci@cavehill.uwi.edu](mailto:socsci@cavehill.uwi.edu) |  [@fsschill](https://www.instagram.com/fsschill) |  [fss\\_chill](https://twitter.com/fss_chill)

[www.cavehill.uwi.edu/fss](http://www.cavehill.uwi.edu/fss)

## Student Affairs (Admissions)

Tel: (246) 417-4115 | (246) 417-4125

Fax: (246) 417-9145

Email: [admissions@cavehill.uwi.edu](mailto:admissions@cavehill.uwi.edu)

[www.cavehill.uwi.edu/admissions](http://www.cavehill.uwi.edu/admissions)

## The University of the West Indies, Cave Hill, Barbados

Tel: (246) 417-4000 | Fax: (246) 425-1327

[www.cavehill.uwi.edu](http://www.cavehill.uwi.edu)

 [UWICaveHill](https://www.facebook.com/UWICaveHill) |  [@uwi\\_cave\\_hill\\_campus](https://www.instagram.com/uwi_cave_hill_campus)

